

# The Nayatt at North Farm

---

**A townhouse with 2 bedrooms and  
a bath and a half.**

## **FEATURES:**

### **Kitchen:**

- European style cabinets with oak trim
- Laminate counter tops
- Fully appliance, including:
  - Dishwasher
  - Refrigerator - 16 cu. ft.
  - Range with range hood
  - Stainless steel sink
  - Wired for disposal

### **Master Bath:**

- Fiberglass tub/shower
- Full width mirror over vanity
- Seamless no-wax vinyl flooring (\*color choice)

### **General:**

- Private spacious deck with arbor view
- Wall to wall carpeting (\*color choice)
- 6 panel interior doors
- Bonus room at ground level for anything you want
- Prewired for cable television, telephone, alarm system
- Undergarage with direct access to house
- Fireplace with oak trim
- Thoughtful design and construction to insure privacy and quiet

### **Energy conscious construction:**

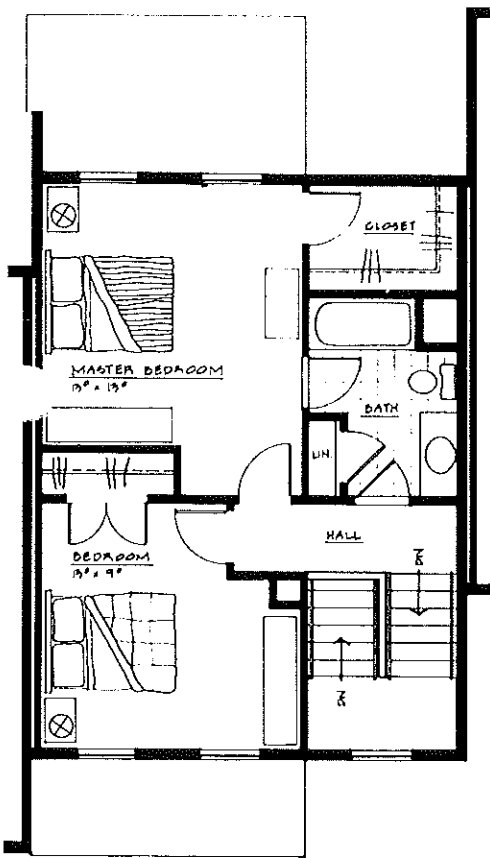
- Thermopane Andersen windows and sliding doors
- Insulated and weatherstripped steel front door
- 6" exterior wall with R21 insulation
- 14" insulation in ceiling - R40
- 6" insulation in floors - R21

*\*determined by building schedule*

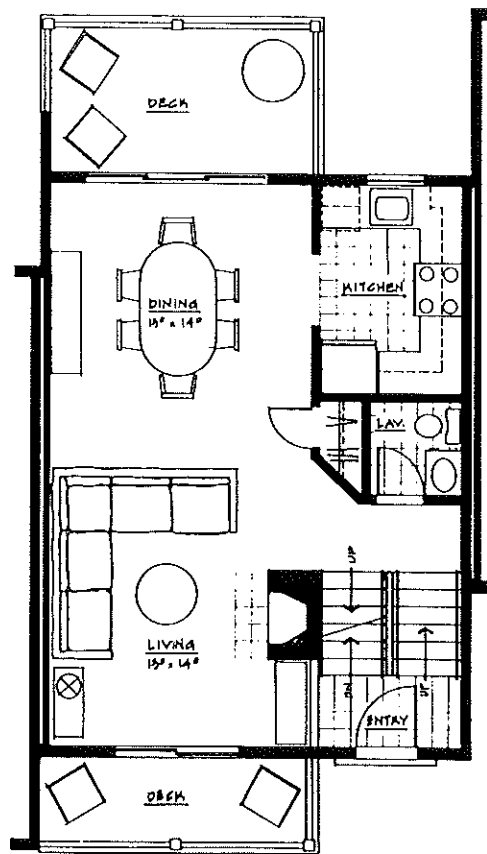
Careful craftsmanship and meticulous attention to detail throughout. Built with pride by NFD Company. **We stand behind everything we build.**



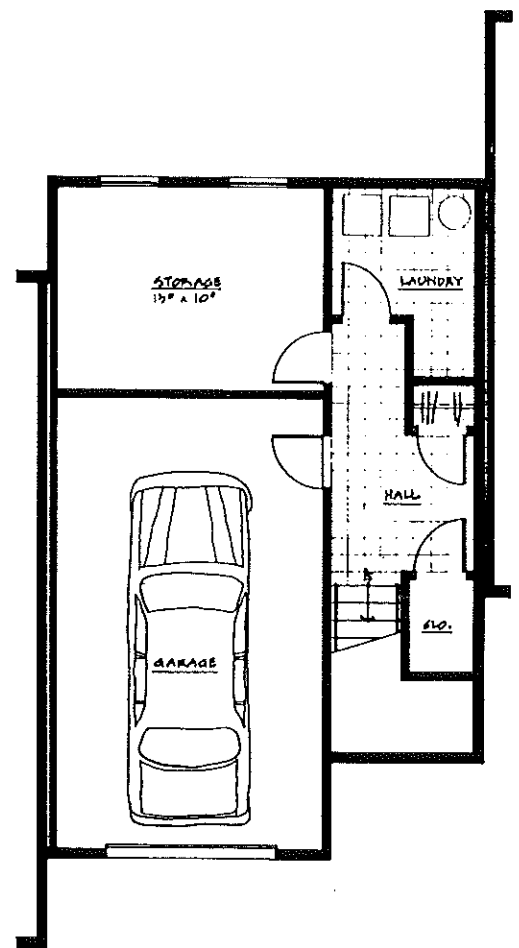
*North Farm*



SECOND FLOOR PLAN



FIRST FLOOR PLAN



BASEMENT PLAN

**NOTE:**  
This is an architect's conceptual drawing. Dimensions and specifications are approximate and subject to reasonable change without notice for architectural construction or marketing purposes.

No warranty or representation, express or implied, is made as to the accuracy or the information contained herein. Please refer to the blueprints and specifications for accurate information.