

The Bristol VII at North Farm

Standard Features

In the Kitchen:

- European style cabinets
- Lights under all cabinets
- Laminate countertops with tile backsplash
- GE Appliances, including:
 - Potscrubber 980 Dishwasher (top rated by Consumer Reports)
 - 17 Cubic Foot Refrigerator
 - Range with Self Cleaning Oven and Hood
 - Disposal
- Double Bowl Stainless Steel Sink
- Armstrong Solarian No Wax Seamless Floor

In the Master Bath:

- Spacious Master Bath with Twin Sinks
- Full Vanity with Drawers
- Platform Tub with Tile Surround
- Ceramic Tile Floor
- Full Wall Mirror over Vanity
- Ceramic Tile Shower with Glass Enclosure

In General:

- Ducted for Air conditioning
- Fireplace with Glass Doors and Heat Circulating Fans
Tile Hearth
- Wall to Wall Carpeting
- Automatic Garage Door Opener

Careful craftsmanship and meticulous attention to detail throughout.
Built by Wildfield Associates, Lawrence C. LeBlanc Builders and The Ranger Company.

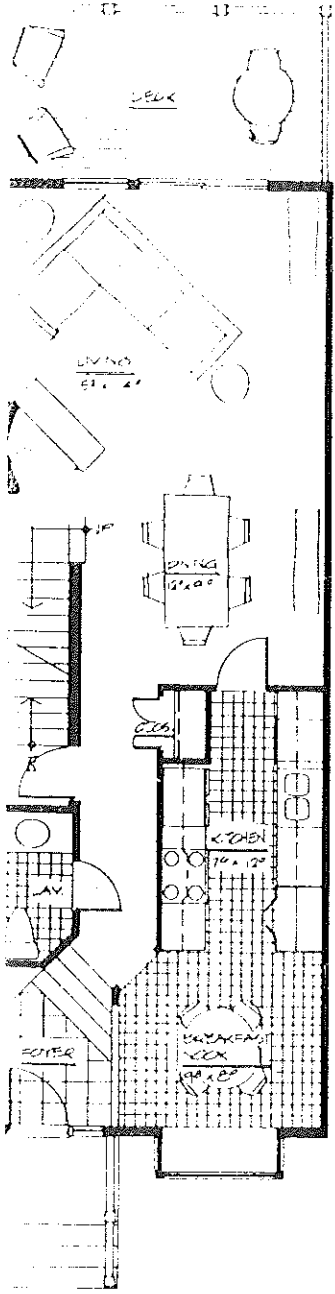
We stand behind everything we build

NOTE:

This is an architect's conceptual drawing. Dimensions and specifications are approximate and subject to reasonable change without notice for architectural construction or marketing purposes. No warranty or representation, express or implied, is made as to the accuracy of the information contained herein. Please refer to the blueprints and specifications for accurate information.

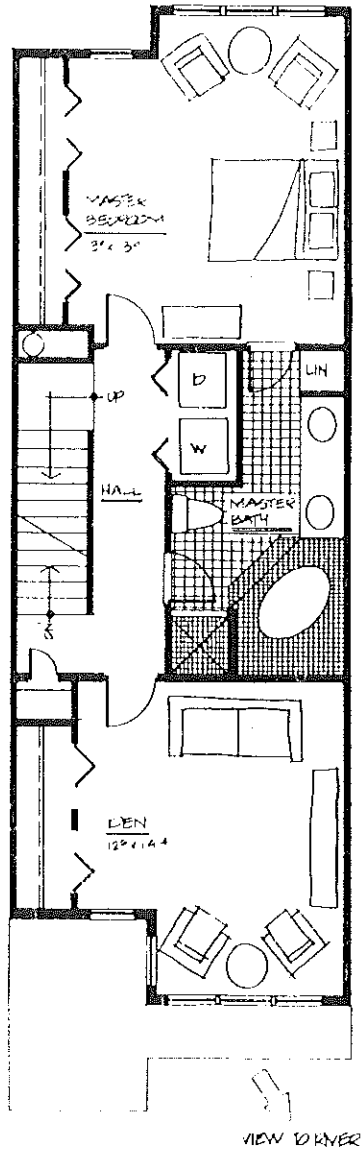
North Farm

VIEW TO BAY



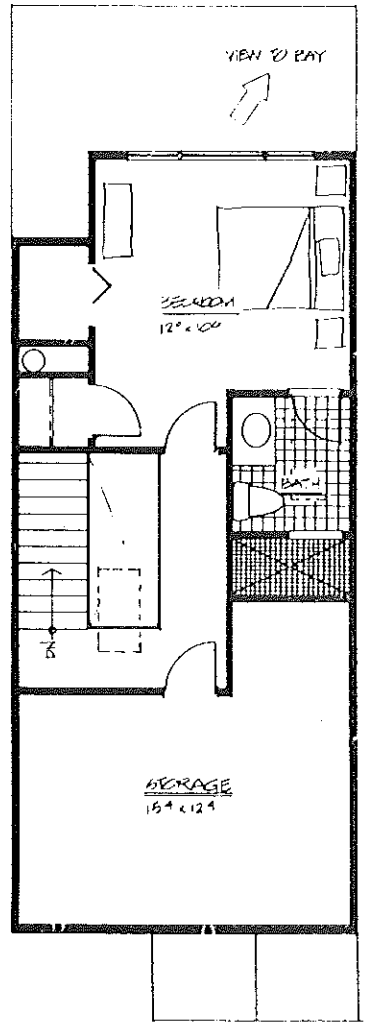
FIRST FLOOR

VIEW TO BAY



SECOND FLOOR

VIEW TO BAY



LOFT